

SPECIFICATION
Revision 0.1
FC-B-28014M(D)-002

Customer	
Model NO.	FC-B-28014M(D)-002
Product Type	TFT 2.8 inch, 240*RGB*320 dots matrix
Remarks	
Signature by Customer:	

Issued by	Checked by	Approved by	Approved by
		R&D	QA

Revision Record

Rev NO.	Rev Date	Contents	Remarks

CONTENTS

General Information

External Dimensions

Absolute Maximum Ratings

Electrical Characteristics

Timing of Power Supply

Backlight Characteristics

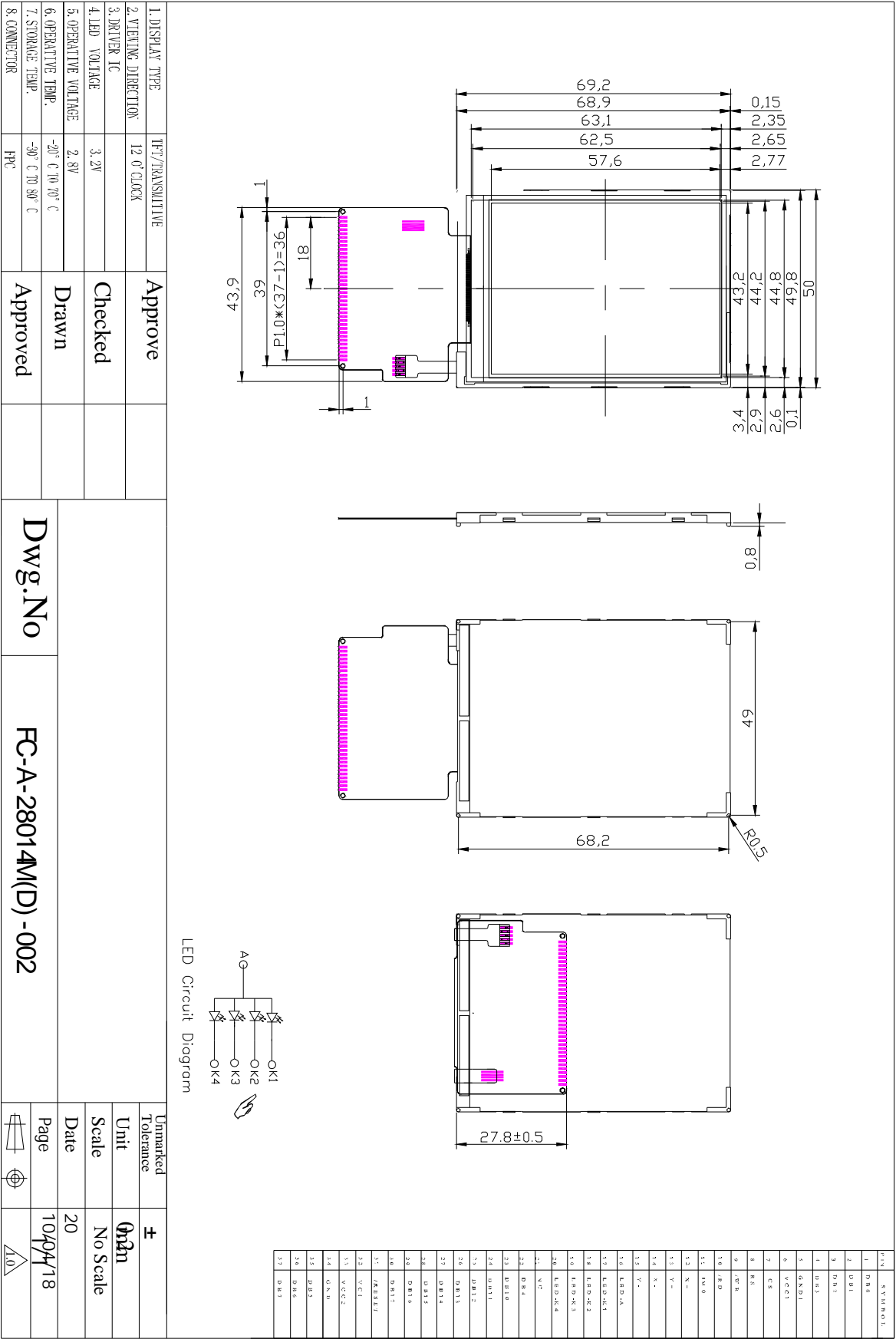
Interface Description

Reliability Test

General Information

Item	Contents
LCD type	TFT transmissive
Viewing direction	12 O’Clock
Outline area(W*H)	50.0mm * 69.2mm*2.45(T)
Active area(W*H)	43.20mm *57.6mm
Number of dots	240*RGB*320
Driver IC	ILI9341
Colors	262K
Interface type	System parallel interface
Input voltage	2.8~3.3V

External Dimensions



Absolute Maximum Ratings

Parameter	Symbol	Min.	Max.	Unit
Supply voltage for logic	IOVcc/Vcc	-0.3	3.6	V
Input voltage	Vin	-0.3	IOVcc+0.3	V
Operating temperature	Vop	-20	70	
Storage temperature	Tst	-30	80	
Humidity	RH		90%(Max 60)	RH

Electrical Characteristics

Parameter	Symbol	Min.	Type	Max.	Unit
Supply voltage for logic	Vcc-Vss	2.7	2.8	3.3	V
Supply voltage for I/O	IOVcc	2.7/1.7	2.8/1.8	3.3/1.9	V
Input Current	Idd	-	11.56	23.12	mA
Input voltage 'H' level	Vih	0.8IOVcc	-	IOVcc	V
Input voltage 'L' level	Vil	-0.3	-	0.2IOVcc	
Output voltage 'H' level	Voh	0.8IOVcc	-	-	
Output voltage 'L' level	Vol	-	-	0.2IOVcc	RH

Timing of Power Supply

Please refer to the driver IC specification.

Backlight Characteristics

Item	Symbol	Min.	Type	Max.	Unit	Condition
Forward voltage	Vf	9.6	9.8	10	V	If=60mA Ta=25
Luminance	Lv	2300	2500	2700	Cd/m ²	
Number of LED	-	3			Piece	-
Connection mode	P	0.8IOVcc	-	IOVcc	V	-

Interface Description

Pin NO.	Signal	I/O	Function
1	DB0	-	Data bus
2	DB1	-	Data bus
3	DB2	-	Data bus
4	DB3	I	Data bus
5	GND		Ground.
6	VCC	I	Power supply
7	CS	-	Ground.
8	RS	-	- Register and Data select signal
9	WR	-	Write signal.
10	RD	-	Read signal.
11	IM0/NC	I/O	Should be NC in this case
12	XL	O	TP SIGNAL XL
13	YU	O	TP SIGNAL YU
14	XR	O	TP SIGNAL XR
15	YD	O	TP SIGNAL YD
16	LEDA	P	LED Power
17	LEDK	P	LED cathode.
18	LEDK	P	LED cathode.
19	LEDK	I/O	LED cathode.
20	LEDK	I/O	LED cathode.
21	NC	--	
22	DB4	I/O	Data bus
23	DB8	I/O	Data bus
24	DB9	I/O	Data bus
25	DB10	I/O	Data bus
26	DB11	I/O	Data bus
27	DB12	I/O	Data bus
28	DB13	I/O	Data bus
29	DB14	I/O	Data bus
30	DB15	I/O	Data bus
31	RESET	I	Reset signal pin.
32	VCC	P	Power supply
33	VCC	P	Power supply
34	GND	P	Ground.
35	DB5	I/O	Data bus
36	DB6	I/O	Data bus
37	DB7	I/O	Data bus

Reliability Test

Test item	Test Condition
High Temperature Storage	60 ± 2 /48 hours
Low Temperature Storage	-10 ± 2 /48 hours
High Temperature Operating	45 ± 2 /48 hours
Low Temperature Operating	0 ± 2 /48 hours
Temperature Cycle	0 ± 2 ~ 50 ± 2 × 10cycles (30min.) (5min.) (30min.)
Damp Proof Test	50 ± 5 × 90%RH/48 hours
ESD test	Voltage: $\pm 4KV$ R: 330 C:150pF Air discharge, 10time