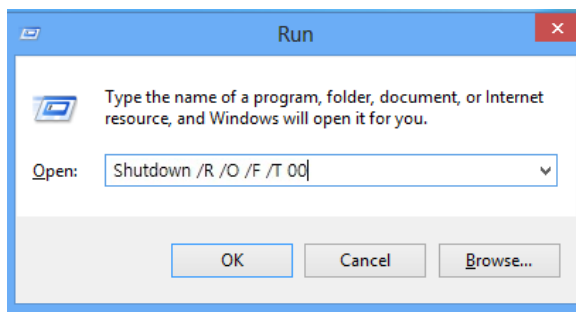


## Driver(E-Con Driver, USB Device Driver) installation at Windows8 64bit OS.

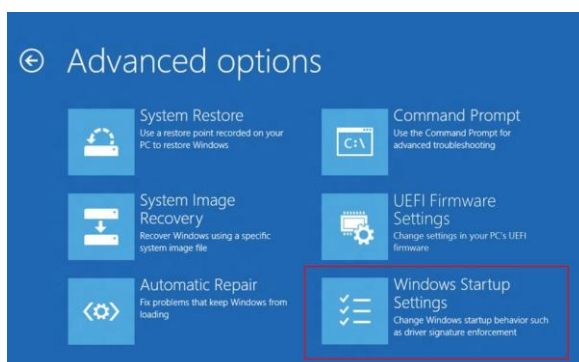
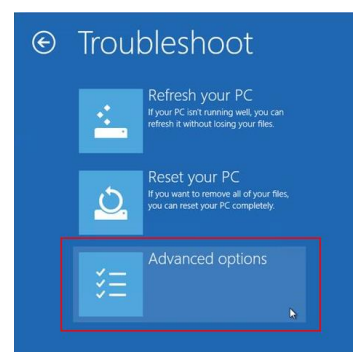
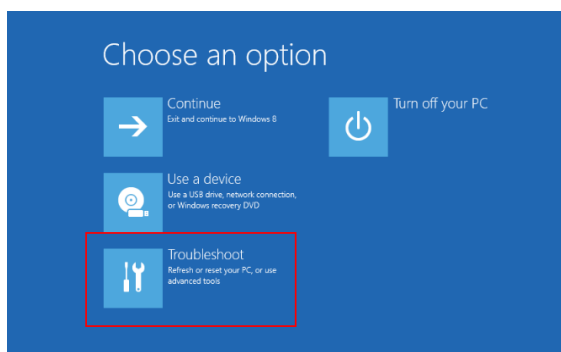
### <After disabling driver signature, device driver installation method>

Ref : After disabling driver signature, to install USB driver method is not recommend by Microsoft.

1. Quit all the working programs.
2. Executes a Run window. (Windows key + 'R')
3. Input as following and click 'OK' ("Shutdown /R /O /F /T 00")



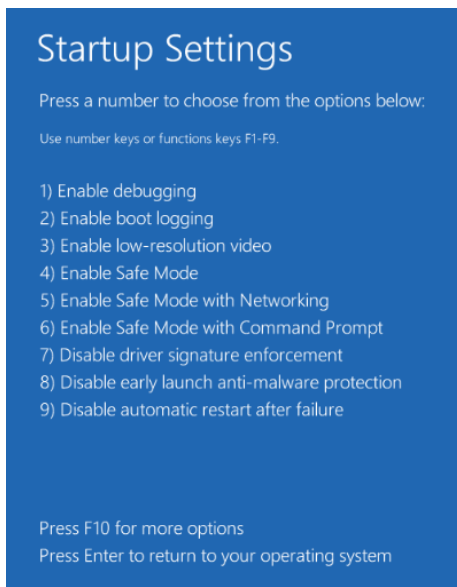
4. When restart and appeared choose an option window, click by next order.  
"Troubleshoot" -> "Advanced option" -> "Windows Startup Settings"



5. When appeared "Windows Startup Settings" window, click "Restart" on the lower right corner.



6. When appeared "Startup Settings" window, select "7) Disable driver signature enforcement".  
(click key '7')



7. After select option, computer will restart.
8. After restart, install driver as installation manual.