



**Preliminary**

# EConFileWriter

**Ver 1.0**  
**May 30, 2011**

**Advanced Digital Chips Inc.**

## History

2011-05-30

Created Preliminary Specification

## EConFileWriter Manual

---

**©Advanced Digital Chips Inc.**

All right reserved.

No part of this document may be reproduced in any form without written permission from Advanced Digital Chips Inc.

Advanced Digital Chips Inc. reserves the right to change in its products or product specification to improve function or design at any time, without notice.

### **Office**

8th Floor, KookMin 1 Bldg.,

1009-5, Daechi-Dong, Gangnam-Gu, Seoul, 135-280, Korea

Tel : + 82-2-2107-5800

Fax : + 82-2-571-4890

URL : <http://www.adc.co.kr>

- 목차 -

1. EConFileWriter .....	4
2. Download .....	4
3. 사용자 설정 .....	7
FIGURE 1 ECONFILEWRITER .....	4
FIGURE 2 TARGET 선택 .....	4
FIGURE 3 DOWNLOAD할 BINARY 선택 1 .....	5
FIGURE 4 DOWNLOAD할 BINARY 선택 2 .....	5
FIGURE 5 DOWNLOAD 1 .....	6
FIGURE 6 DOWNLOAD 2 .....	6
FIGURE 7 DOWNLOAD 3 .....	7
FIGURE 8 USE USER SET CLOCK 선택 .....	7
FIGURE 9 5MHZ로 설정한 후 DOWNLOAD .....	8
FIGURE 10 DISABLE SYSTEMINIT COMMAND AND USE MY COMMAND LIST 선택 .....	9
FIGURE 11 USER INITIAL CODE NEW 선택 .....	10
FIGURE 12 USER INITIAL CODE 입력 .....	10
FIGURE 13 ADD NEW FILES에서 BINARY 선택 .....	11
FIGURE 14 BINARY 추가 후 DOWNLOAD .....	11
FIGURE 15 DOWNLOAD 완료 .....	12

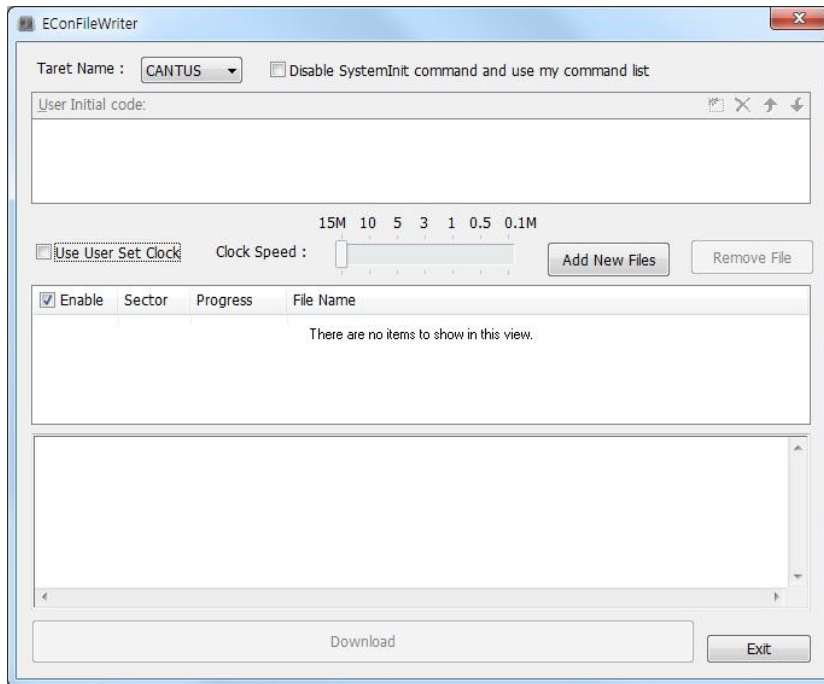
## 1. EConFileWriter

EConFileWriter는 E-CON을 제어할 수 있는 Windows Program으로, 간편한 Download용으로 사용 할 수 있다. 본 문서는 EConFileWriter의 사용자 Manual이다. E-CON에 관한 사항은 ECon Manual을 참조 하라.

## 2. Download

### A. EConFileWriter 실행

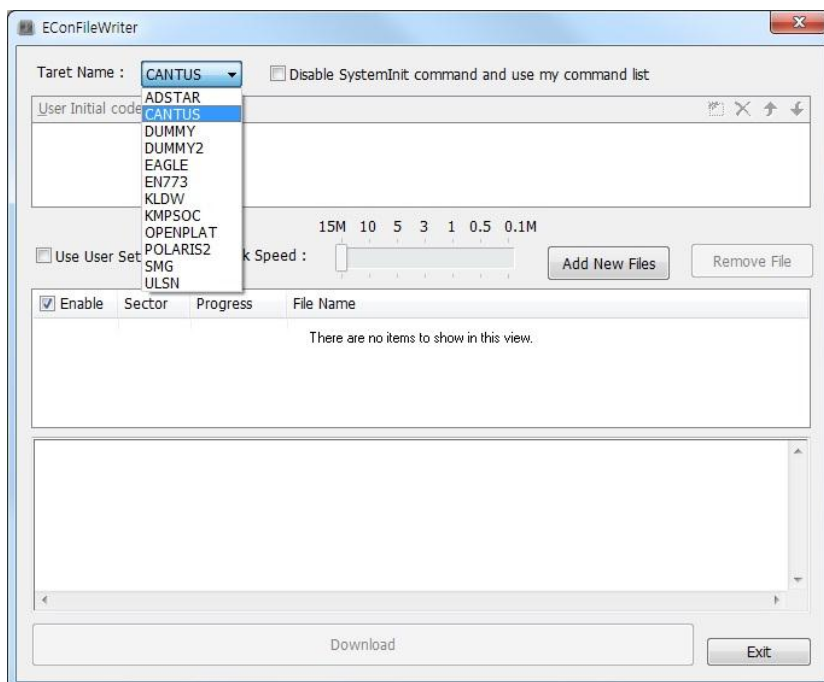
Figure 1 EConFileWriter



### B. Target 선택

Download할 Target을 선택한다.

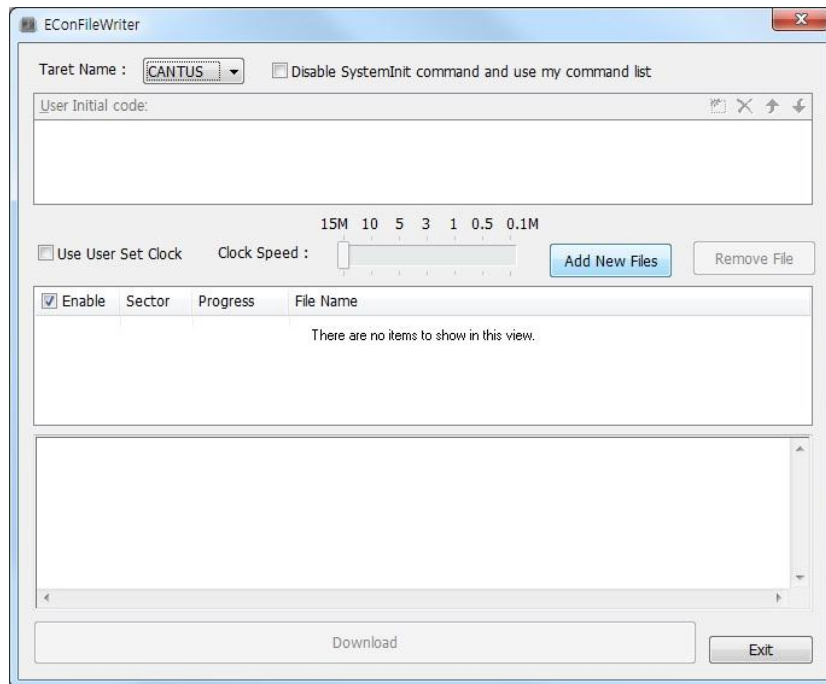
Figure 2 Target 선택



### C. Binary 선택

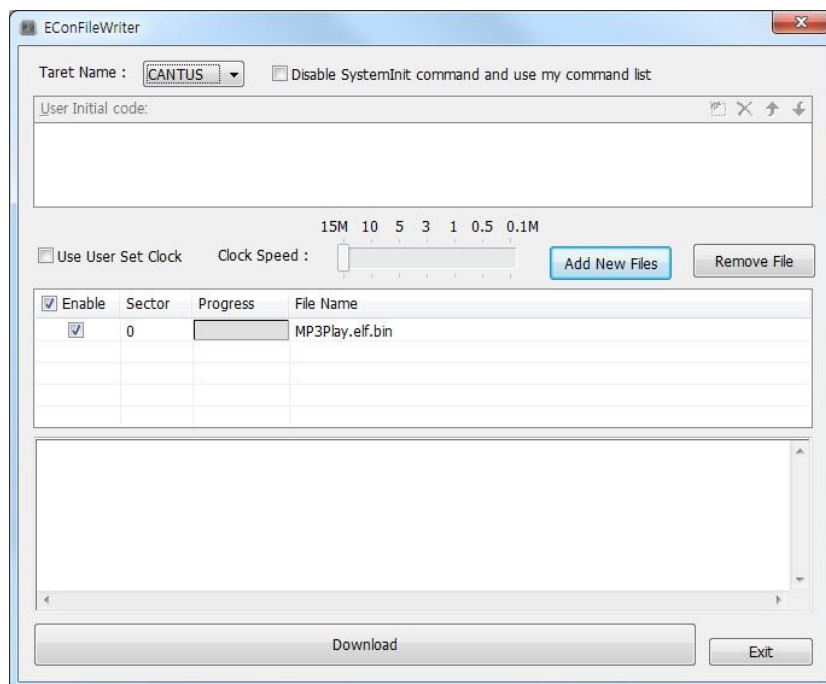
Target이 선택 되면 'Add New Files'를 눌러 Download할 Binary를 선택한다.

**Figure 3 Download할 Binary 선택 1**



Download할 Sector를 선택하고, 여러 File을 선택할 경우 Enable이 Check된 File만 Download 한다.

**Figure 4 Download할 Binary 선택 2**



#### D. Download 실행

‘Download’를 실행 한다.

Figure 5 Download 1

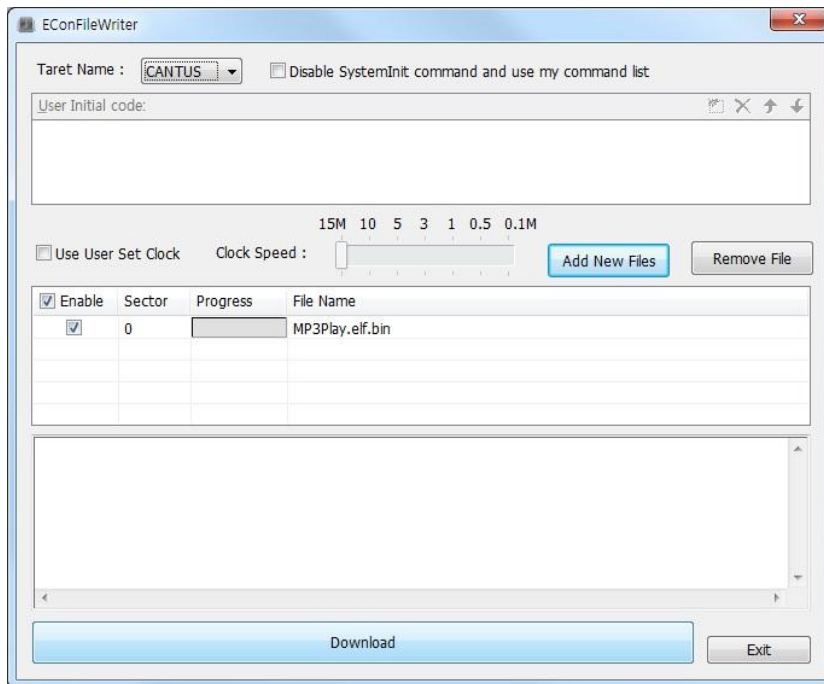


Figure 6 Download 2

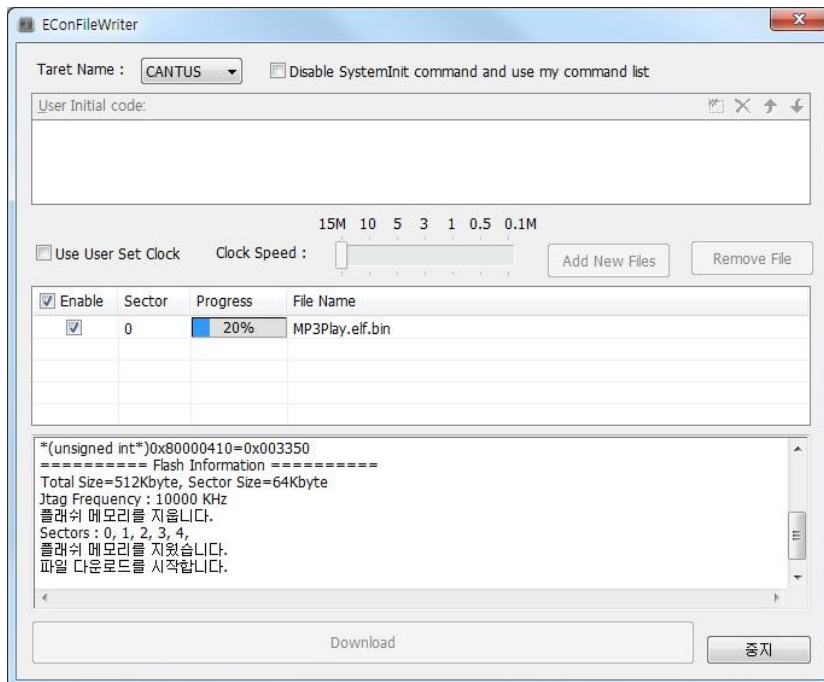
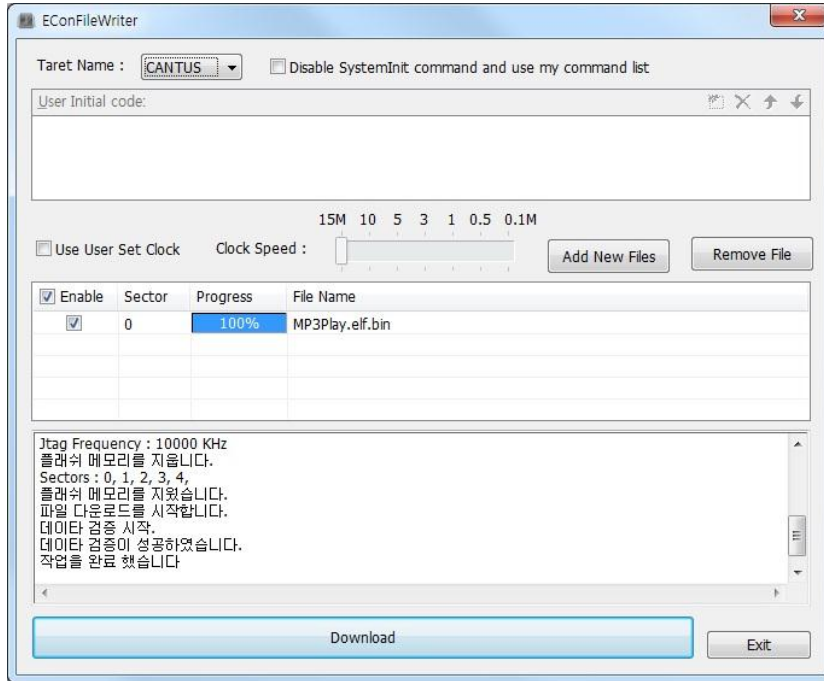


Figure 7 Download 3



### 3. 사용자 설정

#### A. Download 속도 설정

사용 환경에 따라 JTAG Clock Frequency를 조정하여 Download 속도를 설정할 수 있다. Default로 10MHz가 설정 된다.

- ① Use User Set Clock 선택한다.
- ② 15MHz ~ 0.1MHz 사이에서 JTAG Clock Frequency를 선택한다.

Figure 8 Use User Set Clock 선택

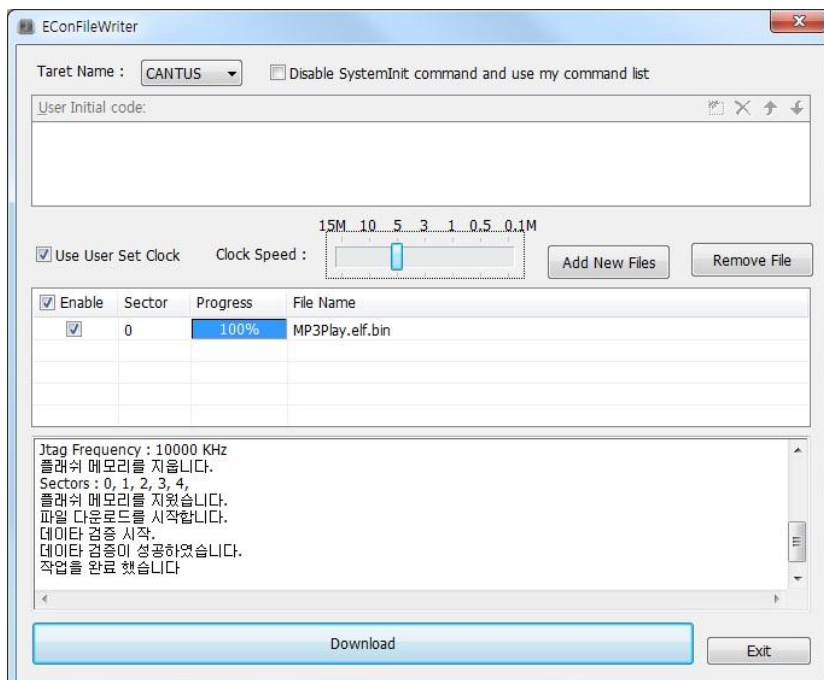
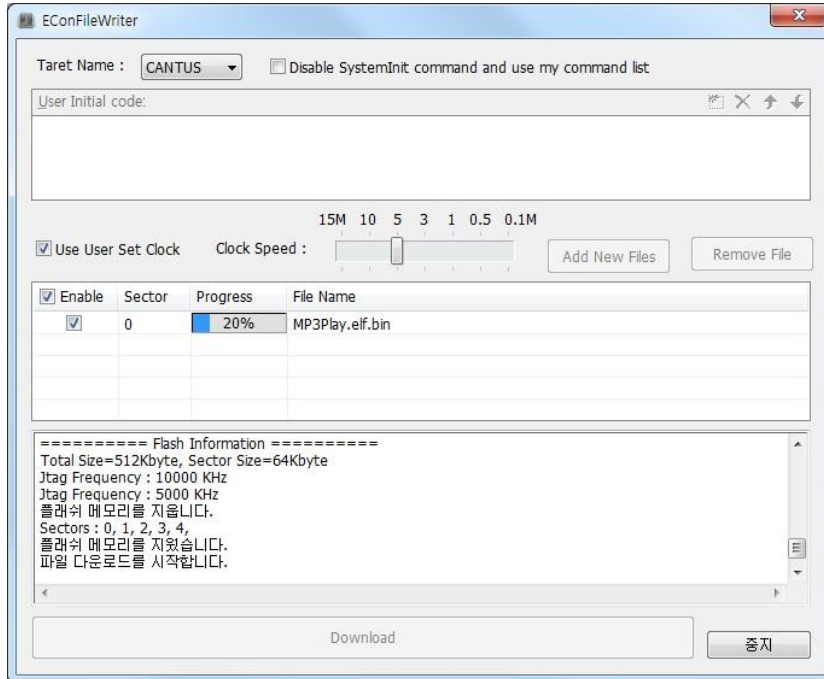


Figure 9 5MHz로 설정한 후 Download





## B. User Initial Code

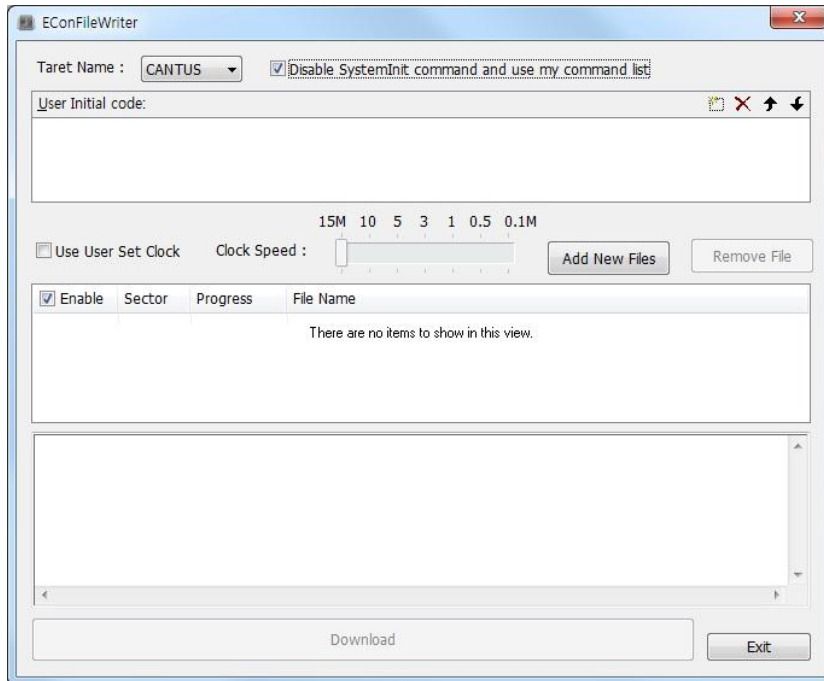
Default Systeminit Command 대신 사용자가 설정한 Initial Code를 사용할 수 있다. Default Systeminit Command에서는 'PLL Control Register(0x80020400)'와 'Internal NOR Flash Memory Control Register(0x80000410)'를 설정한다.<sup>1</sup>

※ CANTUS의 경우 Default Systeminit Command

```
===== system init =====  
*(unsigned int*)0x80020424=0x000003  
*(unsigned int*)0x80020400=0x002040  
*(unsigned int*)0x80020404=0x000001  
*(unsigned int*)0x80020424=00000000  
*(unsigned int*)0x80000410=0x003350
```

- ① Disable Systeminit command and use my command list를 선택 한다.

Figure 10 Disable Systeminit command and use my command list 선택



<sup>1</sup> Target에 따라 Systeminit에서 수행 되는 명령은 다를 수 있다.

- ② New를 눌러 사용할 Command를 입력 한다. 아래는 ‘Internal NOR Flash Memory Control Register(0x8000410)’를 0xFFA0로 설정 한다.

```
writew 0x80020424,0x3  
writew 0x80020400,0x2040  
writew 0x80020404,0x1  
writew 0x80020424,0x0  
writew 0x8000410,0xFFA0
```

Figure 11 User Initial code New 선택

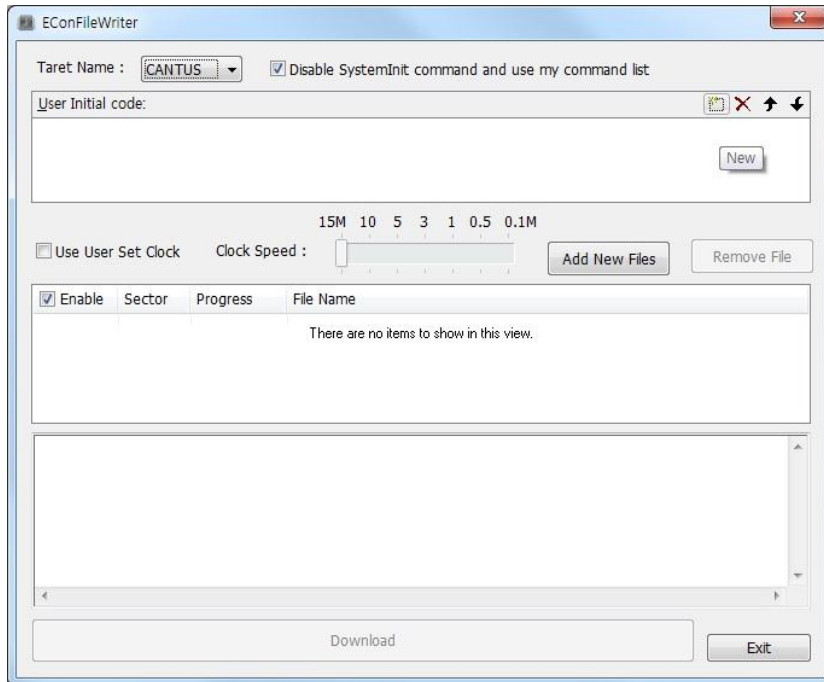


Figure 12 User Initial code 입력

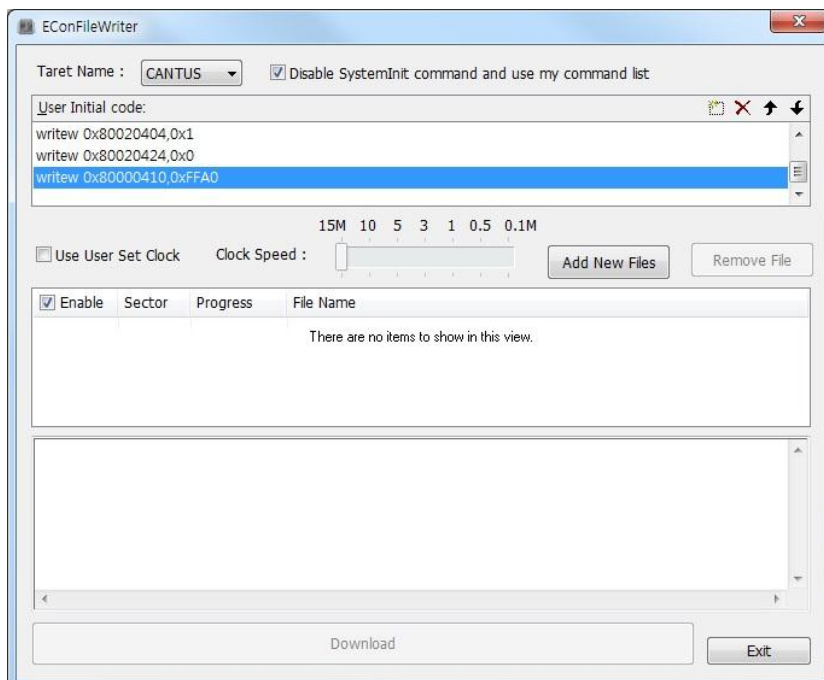


Figure 13 Add New Files에서 Binary 선택

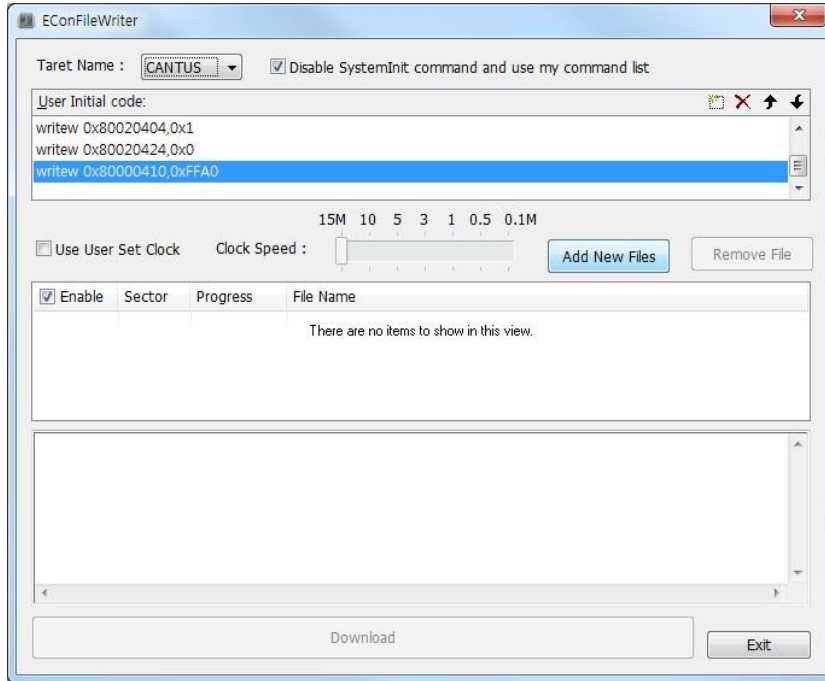


Figure 14 Binary 추가 후 Download

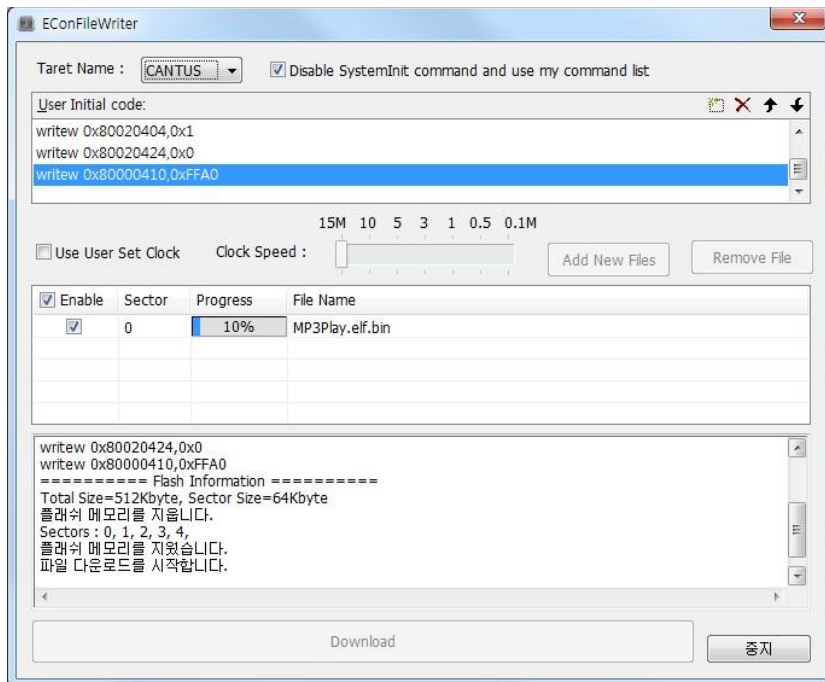


Figure 15 Download 완료

